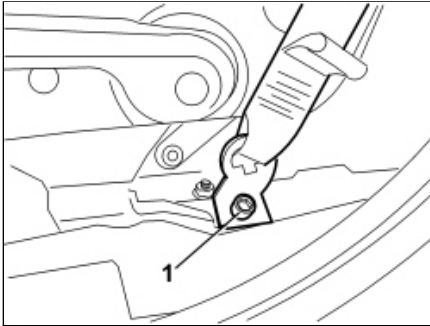



## ALFA 159 1.9 JTD 16V FRONT SEAT (ONE), LEFT OR RIGHT - R.R. 7045A10



 Removing ( [Refitting](#)  )

 Before removing and refitting the seat the following preliminary operations must be carried out.

- Extract the electronic key.
- Disconnect the battery leads and insulate them.
- Wait for 10 minutes before continuing.

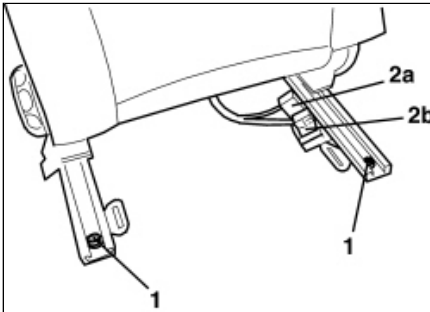
 FOLLOW ALL THE RECOMMENDED SAFETY INSTRUCTIONS

**Op. 5580C AIR BAG SYSTEM**

- Move the seat to the front end of its travel.

1. Undo the bolt fixing the end of the front seat belt on the seat.

1. Unscrew the rear fixing bolts.




2. Disconnect the electrical connections (2a) and (2b).

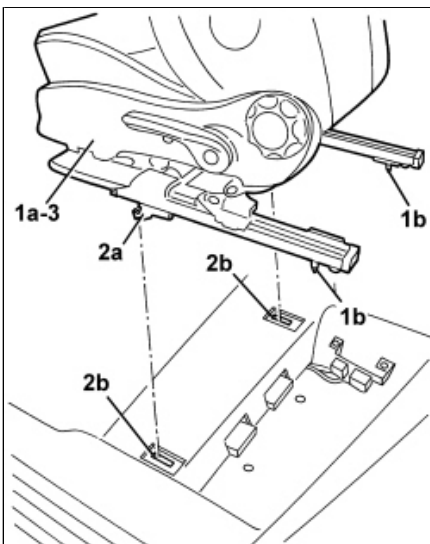
Description	Component
DRIVER'S SEAT COUPLING	<a href="#">See D070 DRIVER'S SEAT COUPLING</a>
PASSENGER SEAT COUPLING	<a href="#">See D071 PASSENGER SEAT COUPLING</a>

1. Raise seat (1a) at the rear and release pins (1b) from their seats.

2. Release front seat retainers (2a) from their seats (2b) in the floor.

3. Recover the seat.

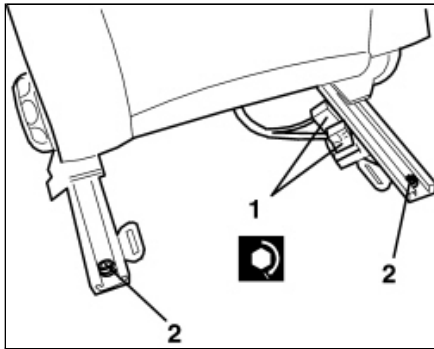
 Move the seat by grasping it only in the area of the head restraint and on the front side of the cushion.



 Refitting ( [Removing](#)  )

- Check that the seat is not damaged.

It is absolutely forbidden to fit seats with pretensioners or side air bags that have fallen



or been subject to abnormal impacts.

 Fit the seat with caution, avoiding falls or impact.

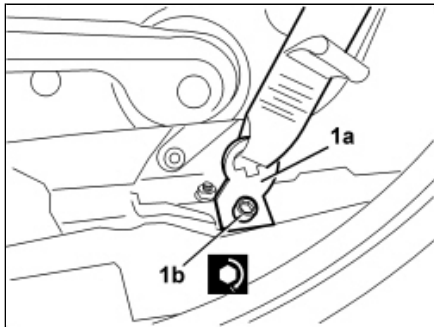
Make sure that the battery is disconnected.

- Engage the front seat retainers in their seat on the floor.

1. Connect the electrical connections.

2. Tighten the rear fixing bolts.

Component	Fastening	dia	Value (daNm)	Validity
SEAT GUIDE FASTENING	Bolt	M10x35	2.2 ÷ 2.6	



1. Position the end of the front seat belt (1a) on the front seat and tighten the bolt (1b) to the recommended torque.

Component	Fastening	dia	Value (daNm)	Validity
FRONT SEAT BELT END	Bolt	M10	3.6 ÷ 4.4	

- Check that the seat is working.

- Use an Examiner to check that the system has not acquired errors during the operation.