



## REPAIR KITS

- [Home](#)
- [FAQ](#)
- [Repair Parts](#)
- [Splicing Procedure](#)
- [Feedback](#)

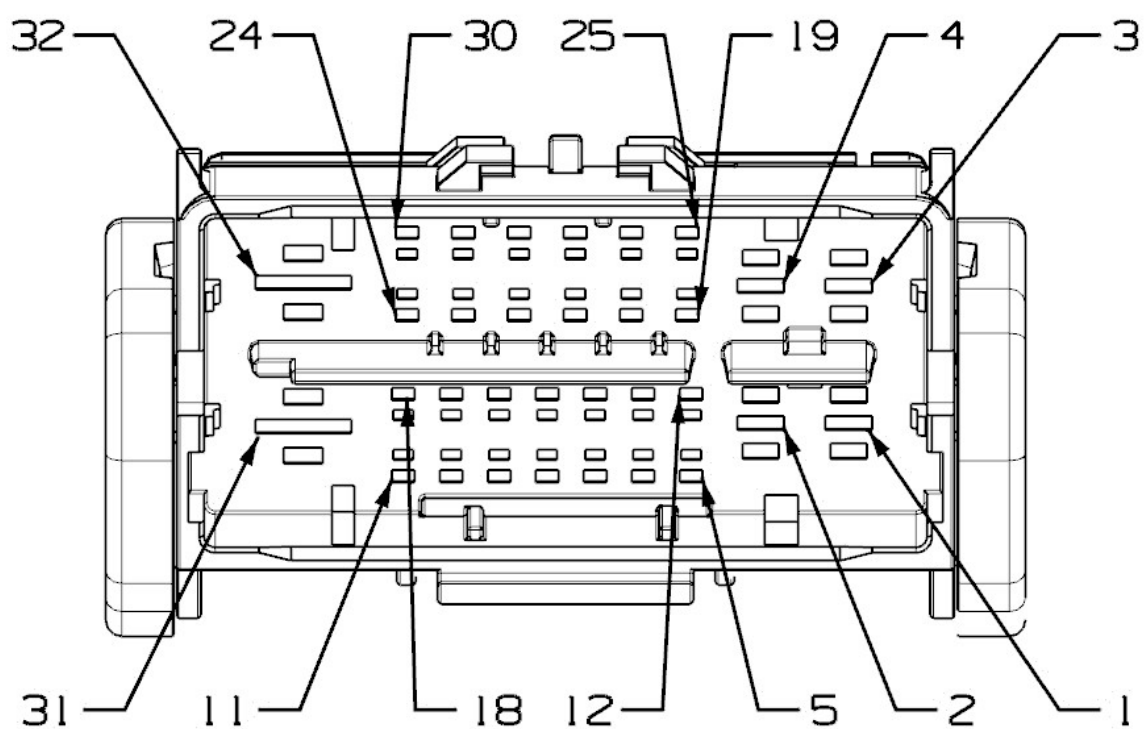
[Back to Results](#) [Print](#)

### I004

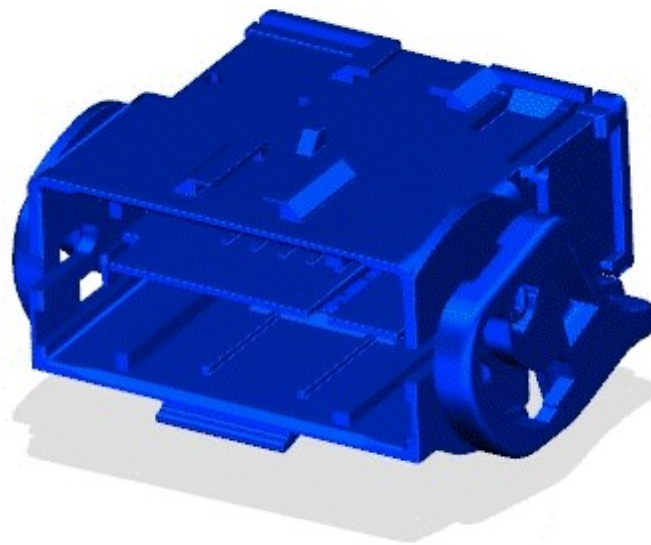
#### Full Repair Kit: 68459241AA

No terminal repair kits have been identified.

#### End View



#### Isometric View



## Removal Tools

A specific removal tool has not been identified.

## Pin Information

	Cav	Circuit	Gauge	Color	Function
1	A901	2.5	PK	FUSED B(+)	
2	Z331	2.5	WH	GROUND	
3	P188	1	BK	PASSENGER FRONT SEAT HEATER CONTROL	
5	A214	0.5	RD/GN	FUSED B(+)	
6	Z341	0.5	WH/DB	GROUND	
13	D158	0.35	BU/BK	CAN IHS (-)	
14	D157	0.35	PK/DB	CAN IHS (+)	
15	R57	0.5	GN	DRIVER SEAT BELT BUCKLE SWITCH SENSE	
16	R730	0.5	WH	PASSENGER SEAT DETECTION RETURN	
20	R730	0.35	OG	PASSENGER SEAT DETECTION RETURN	
21	R263	0.35	PK/BK	DRIVER SEAT POSITION SENSOR VOLTAGE	
22	R7	0.5	GN/YE	LEFT SEAT THORAX SQUIB 1 LINE 1	
23	R5	0.5	OG/BK	LEFT SEAT THORAX SQUIB 1 LINE 2	
24	Z331	0.5	BK	GROUND	
25	P968	0.5	YE/DB	HEATED SEAT SENSOR RETURN	
26	P688	0.5	GY/RD	PASSENGER FRONT HEATED SEAT TEMP SENSE	
27	C91	1	GY	HEATED STEERING WHEEL FEED	
28	A214	0.5	BU/RD	FUSED B(+)	

Cav Circuit Gauge Color				Function
28	A214	0.5	RD	FUSED B(+)



Mopar is a registered trademark of Chrysler Group LLC. © Copyright 2011 Chrysler Group LLC. All Rights Reserved. Chrysler, Jeep, Dodge, Ram, Mopar and the Pentastar logo are registered trademarks of Chrysler Group LLC. FIAT is a registered trademark of Fiat Group Marketing & Corporate Communication SpA, used under license by Chrysler Group, LLC. GEM and design is a registered trademark of Chrysler Group Global Electric Motorcars LLC, a wholly owned subsidiary of Chrysler Group LLC. ©2011 Chrysler Group LLC, All Rights Reserved. v1.5.4 Built:09/14/2020